



GAT MONTHLY MEMBERSHIP PROGRESS REPORT

Results as of: 6/30/2023

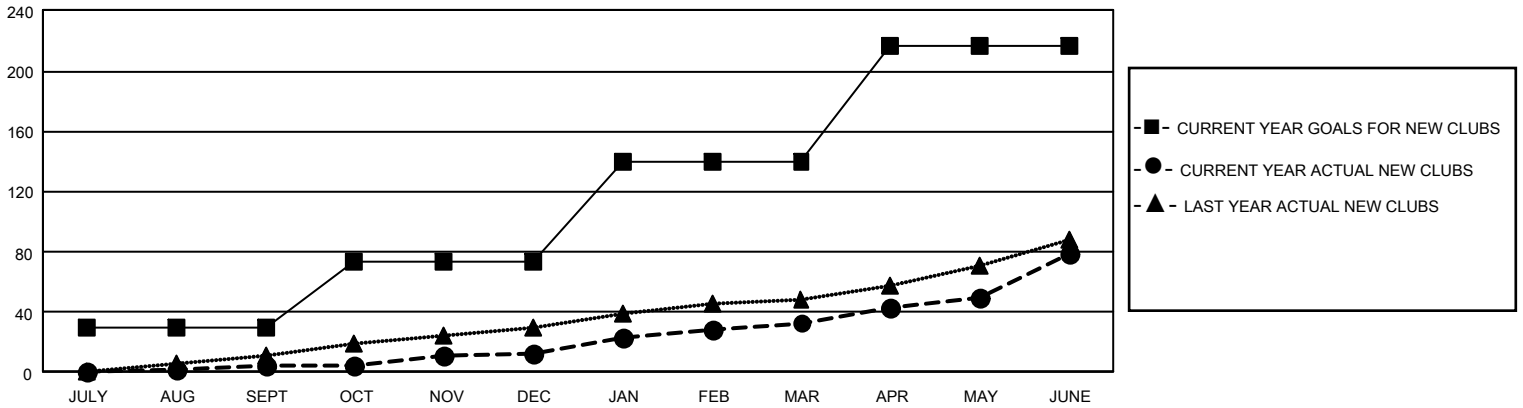
GAT Constitutional Area 4

REPORT DOES NOT INCLUDE CLUBS IN UNDISTRICTED AREAS.

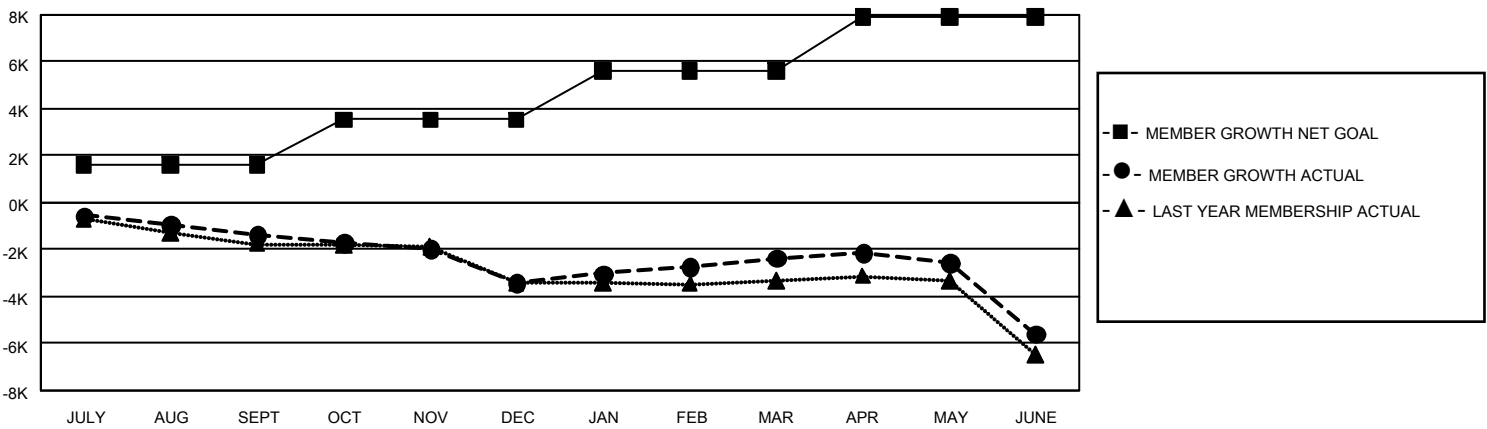
Clubs			
RESULTS FOR 2022-2023			
QUARTER	NEW CLUB GOAL	NEW CLUBS	DROPPED CLUBS
JULY/AUG/SEPT	90	4	80
OCT/NOV/DEC	129	9	47
JAN/FEB/MAR	201	20	37
APR/MAY/JUNE	228	46	86

Members			
RESULTS FOR 2022-2023			
QUARTER	MEMBER GROWTH NET GOAL	MEMBER GROWTH ACTUAL	DROPPED MEMBERS ACTUAL (including transfers)
JULY/AUG/SEPT	1596	2,665	3,615
OCT/NOV/DEC	1935	3,951	5,541
JAN/FEB/MAR	2081	5,220	3,630
APR/MAY/JUNE	2310	6,219	8,667

GOALS AND ACTUAL NEW CLUBS CUMULATIVE



GOALS AND ACTUAL MEMBERS CUMULATIVE



DROPPED CLUBS: 249	
DROPPED MEMBERS	
DECEASED	2,611
CLUB CANCELLED	1,231
OTHER	17,611
TOTAL	21,453

5,526 CLUBS OF 9,087 ADDED 1 OR MORE NEW MEMBERS

[CLICK HERE FOR CUMULATIVE MEMBERSHIP DATA](#)

GENDER DISTRIBUTION	
MALE	166,051 (74.98%)
FEMALE	55,385 (25.01%)
NON BINARY	1 (0.00%)
PREFER NOT TO ANSWER	27 (0.01%)
TOTAL FAMILY UNIT MEMBERS	10,944
FAMILY MEMBERS PAYING HALF DUES	5,649